



MACHINE SPECIALTY & MANUFACTURING, INC.

**ISO 9001:2015, API Q1, API 6A, API 16A, API 16C
LICENSED MANUFACTURING AND FABRICATION FACILITY**

**For all inquiries, orders or questions, contact us at 1-800-256-1292
or visit our website at www.msmmfg.com**



**MACHINE SPECIALTY
& MANUFACTURING, INC.**

ABOUT US

Located in the heart of Louisiana's Cajun country, Machine Specialty & Manufacturing Inc. strives to achieve the highest level of quality and reliability in meeting our customers needs. We pride ourselves with on-time delivery to competitive pricing and product availability. Our knowledgeable sales team is dedicated, always here to support our customers and distributors and ready to answer any questions that you have regarding our products.

HISTORY

MSM was founded in 1982 by its president, Andy Vige. He grew the company by providing high-quality oilfield products and customer service.

For all inquiries, orders or questions, contact us at 1-800-256-1292
or visit our website at www.msmmfg.com

FACILITIES



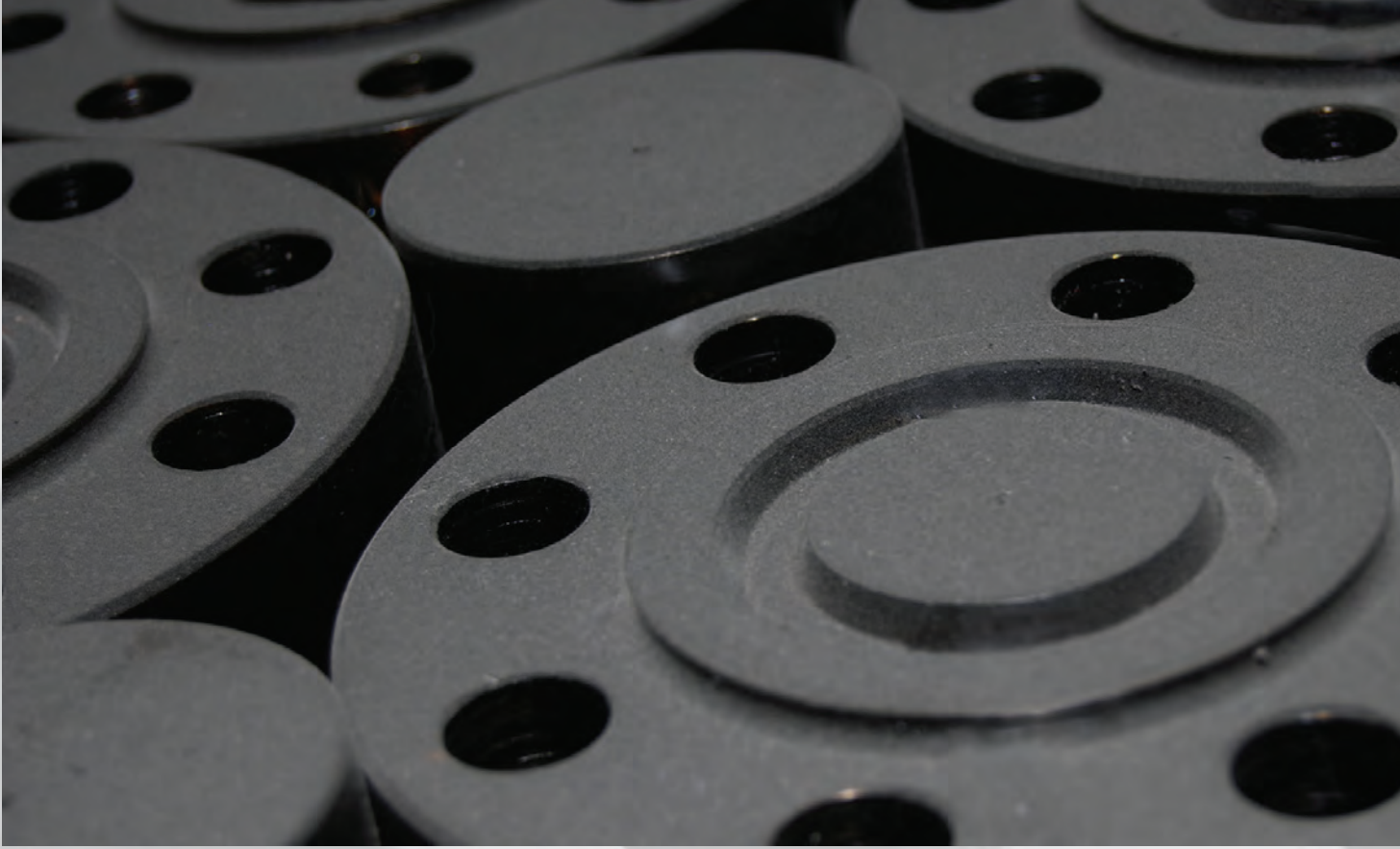
CORPORATE OFFICE



**350,000 SQUARE FEET FACILITY
LOCATED IN YOUNGSVILLE, LA**

**SENIOR MANAGEMENT HAS OVER 55 YEARS OF
EXPERIENCE SERVING THE OIL & GAS INDUSTRY**

FLANGES



SWIVEL FLANGE



EXPANDER FLANGE



ORIFICE FLANGE



SKILLET & SPECTACLE BLIND



MSM stocks a large inventory of raw materials ready for manufacturing to meet our customer's specifications and delivery requirements. At our Houma facility, we stock a full line of forged steel fittings, unions, outlets, seamless nipples and swages.

**API X HAMMER
UNION ADAPTER**



API RTJ WELD NECK

REDUCING FLANGE



API RTJ BLIND



FLANGES



10K CHOKE & KILL LINE SWIVEL FLANGES



WELD FITTINGS



4130 WELD FITTINGS AND CROSSES

4130 REGULAR WELD FITTINGS



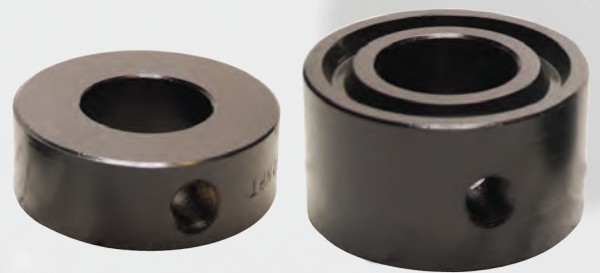
4130 BLOCK STYLE WELD FITTINGS



4130 WELD CROSSES



BLEED RINGS



STAINLESS
STEEL
BLEED
RING

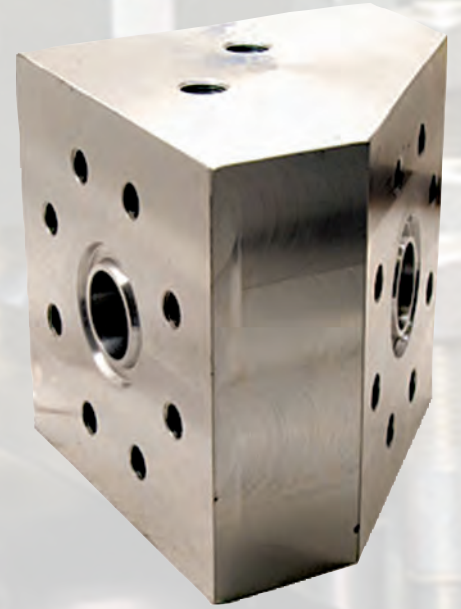
INSTRUMENT FLANGES



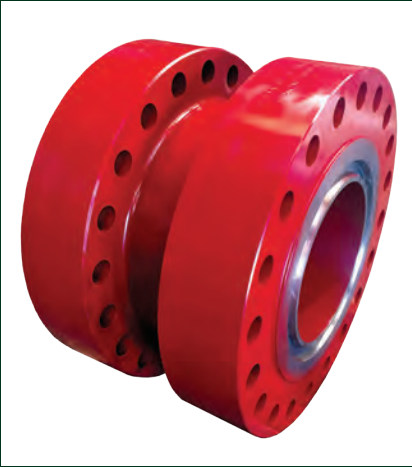
CUSTOM WELL CONTROL EQUIPMENT



API 45° STUDDED BLOCK



SPACER SPOOL



MUD CROSS



ADAPTER SPOOL



PUMPING SPOOL



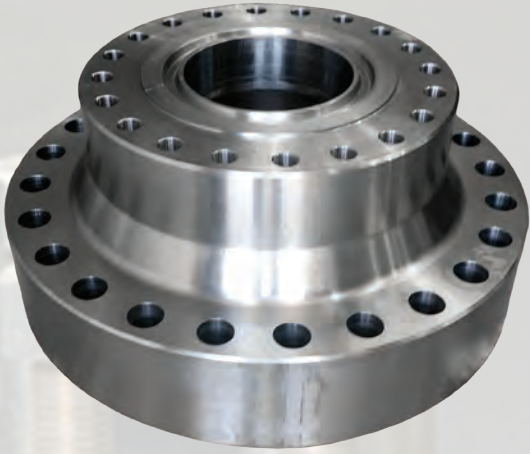
STUDDED
BUFFER
TANK



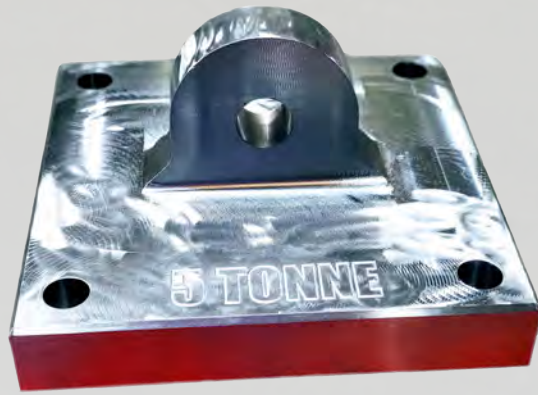
BUFFER
TANK



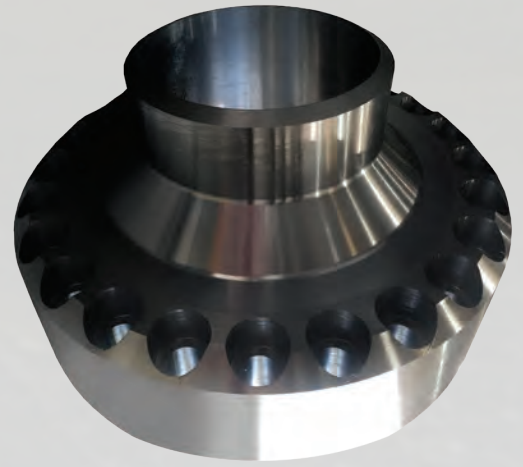
CUSTOM ADAPTER



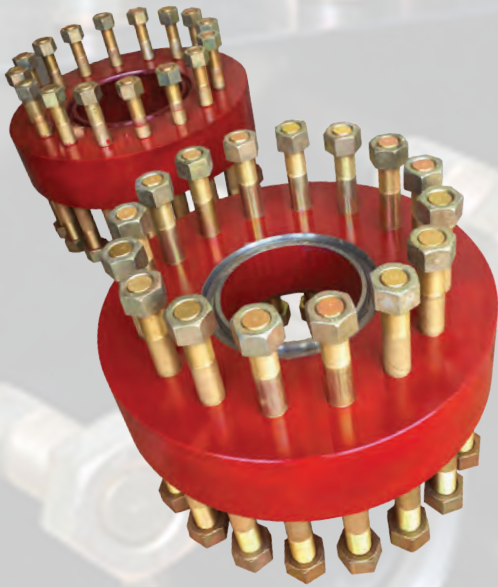
INTEGRAL PADEYE



RISER FLANGE



DSA



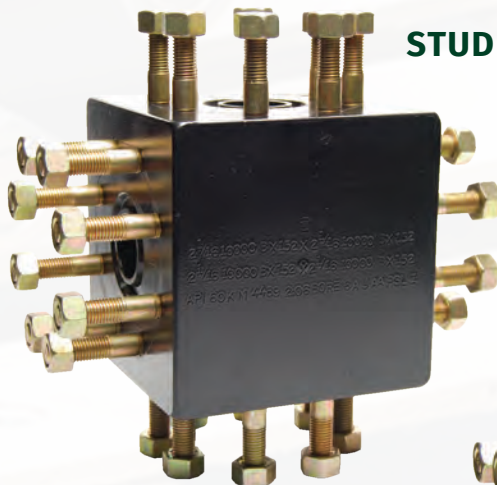
SUCTION ADAPTER



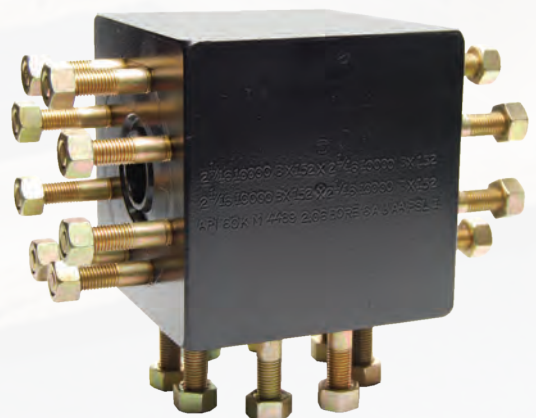
DOUBLE BLOCK COMPACT BALL VALVE BODIES



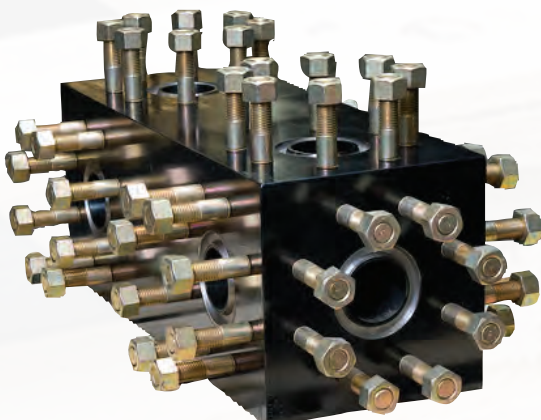
STUDED CROSS



STUDED TEE



**MULTIPLE
OUTLET
BLOCK**



CUSTOM EQUIPMENT

BUFFALO HEAD



GOAT HEAD

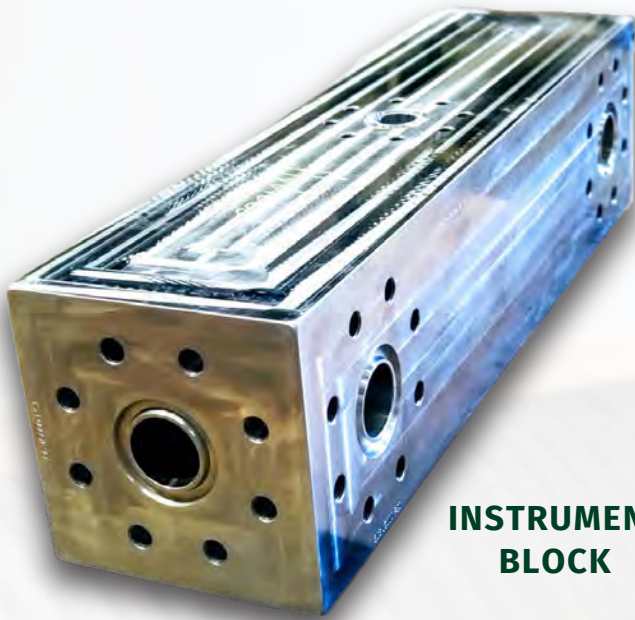


**ANSI
INSTRUMENT
BLOCK**



SS BLAST JOINTS

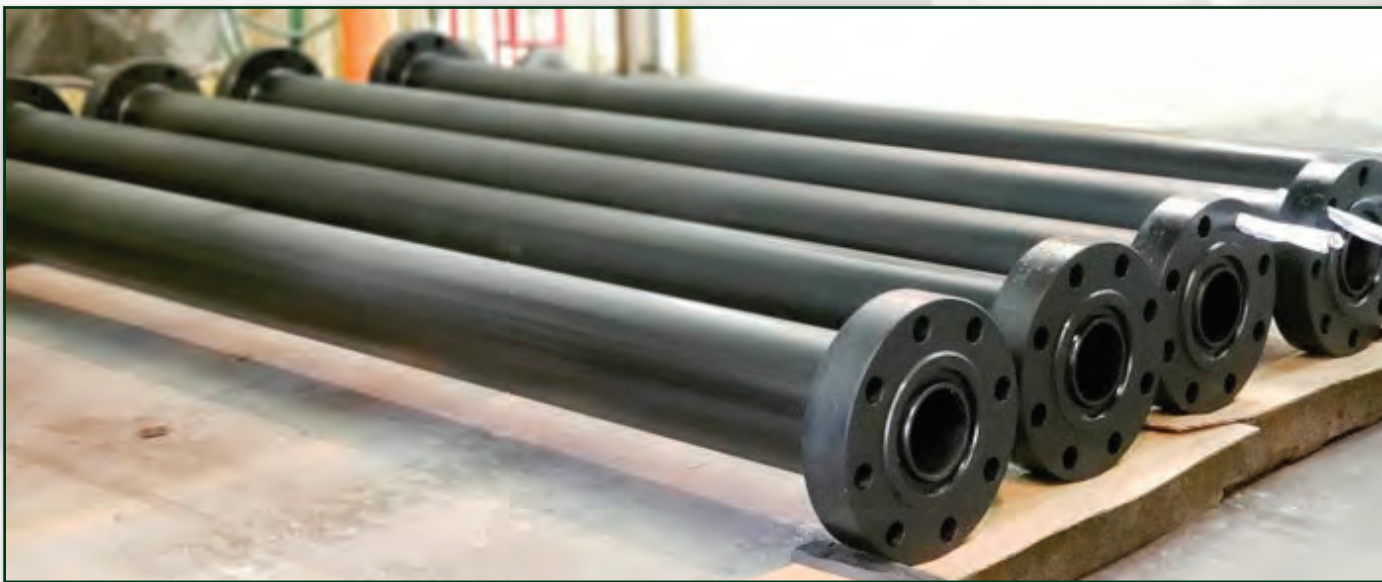




**INSTRUMENT
BLOCK**



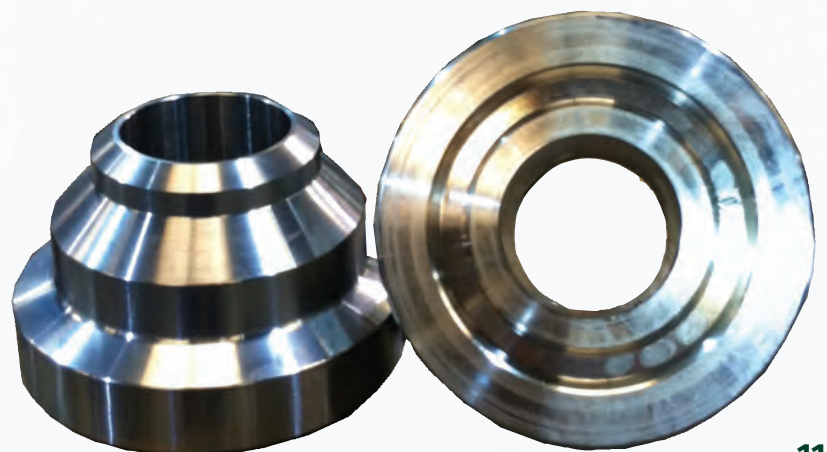
**STUDED X
FLANGE 90**



**SEAMLESS
SPOOLS**



4130 FLOWLINE WELDING

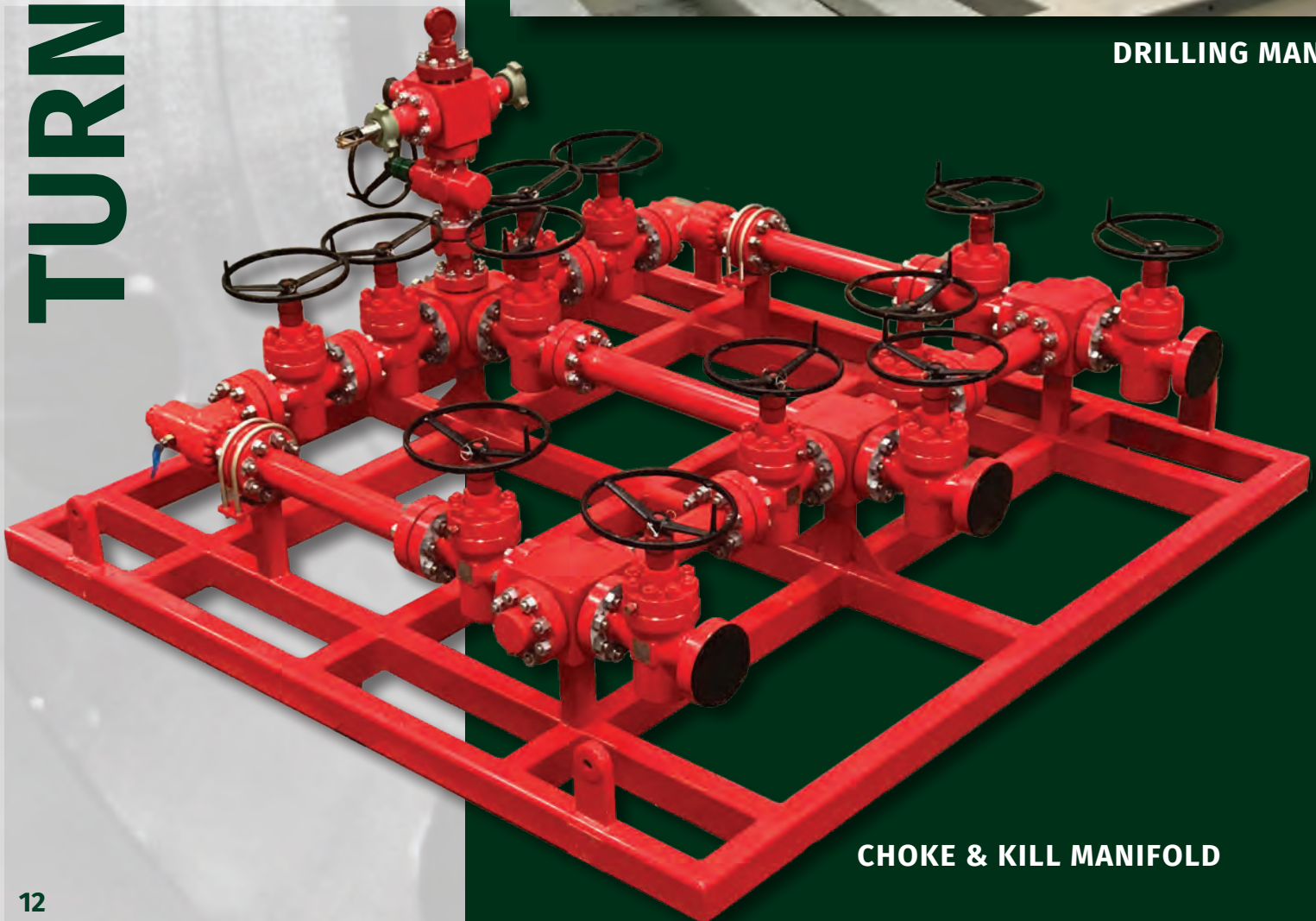


HUBS WITH STAINLESS OVERLAY

TURNKKEY MANIFOLDS



DRILLING MANIFOLD



CHOKES & KILLS MANIFOLD

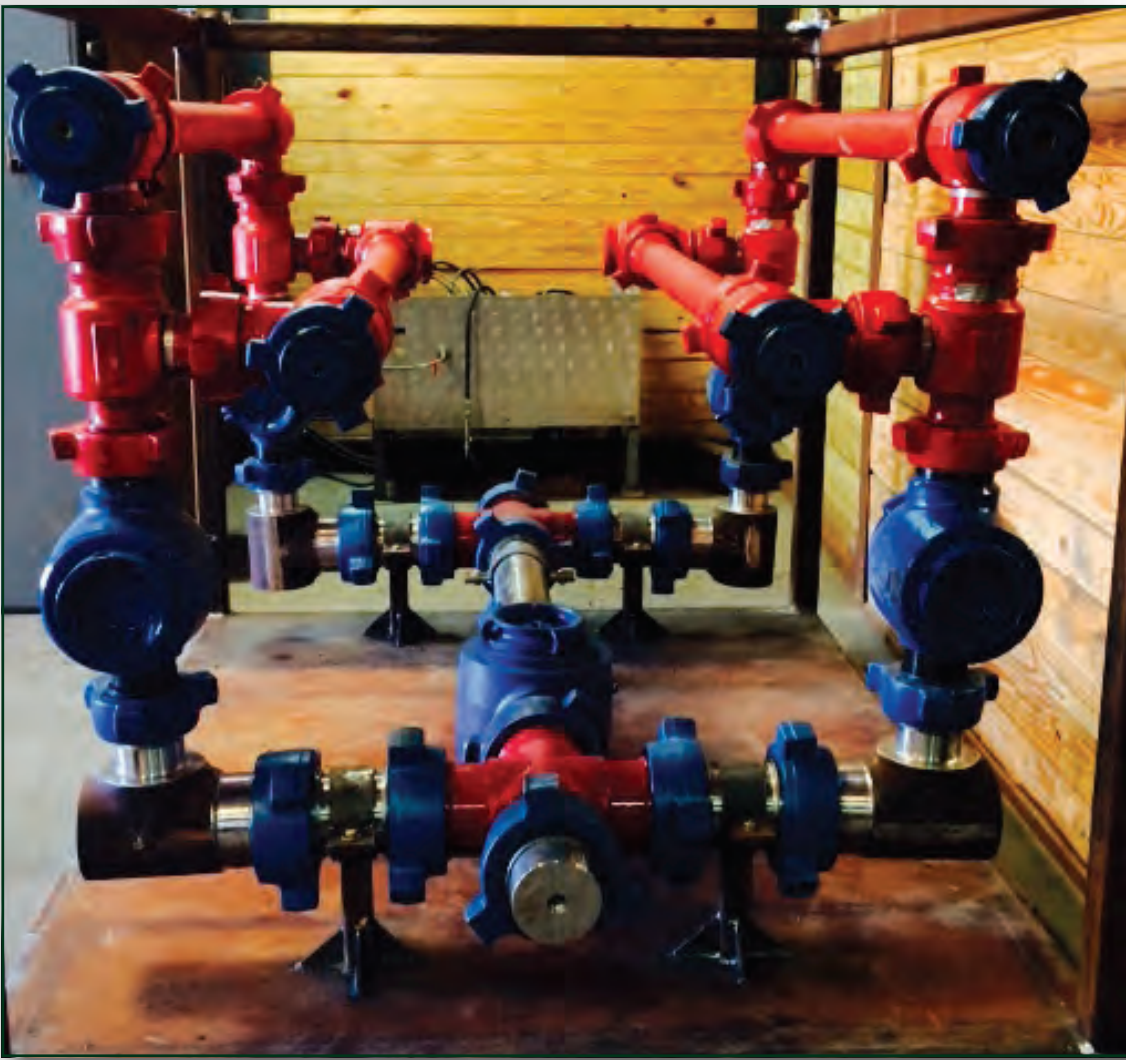


**DRILLING
MANIFOLD**

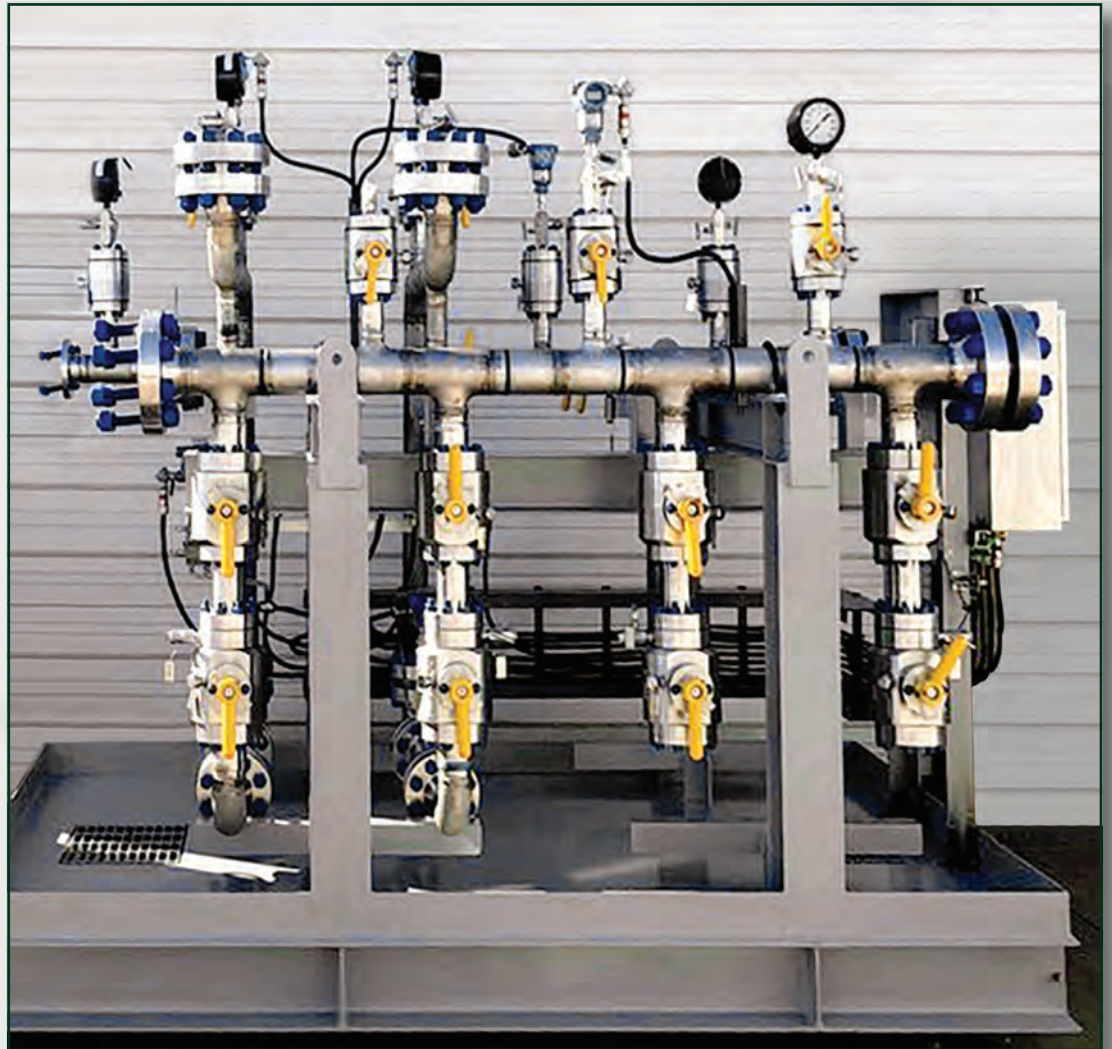
**REFURBISHED
DRILLING
MANIFOLD**



TURNKKEY MANIFOLDS

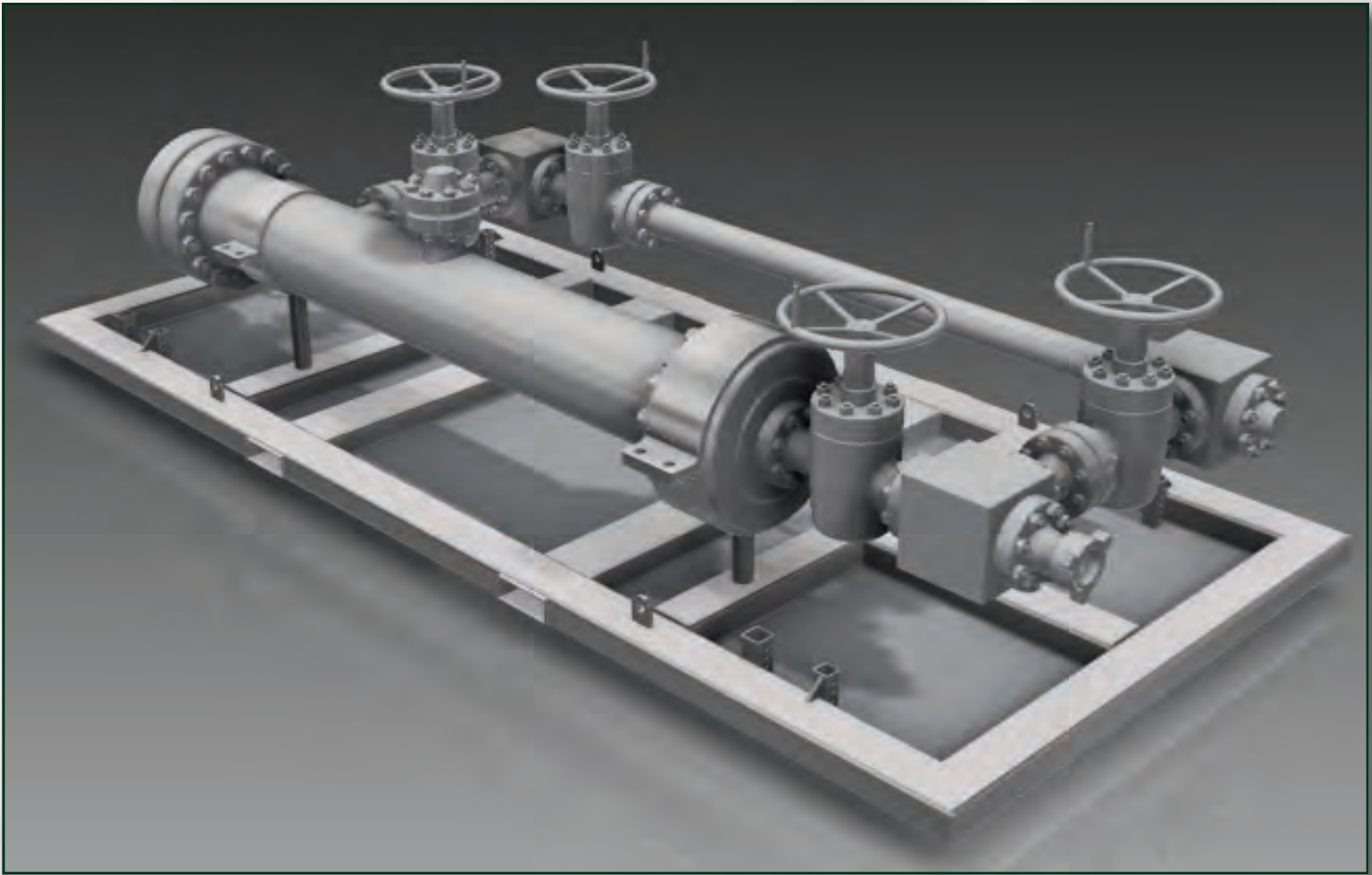


1502 FLOW MANIFOLD



SUPER DUPLEX SS GAS INJECTION MANIFOLD

PLUG CATCHERS



THREADED PRESSURE EQUIPMENT



CROSS OVER



CUSTOM SUB



WIRELINE ADAPTERS

1502 FLOW CROSS



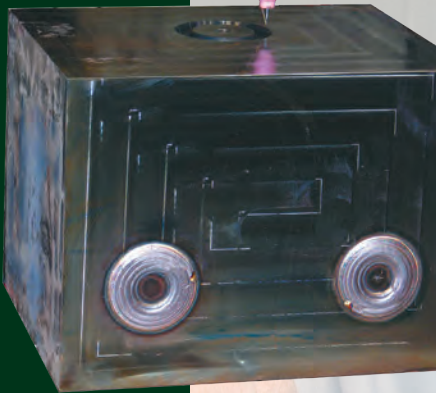
1502 FLOW 90'S



WELDING & FABRICATION

Our welding facilities offer a wide range of capabilities which include the application of CRO/CRA, fabrication, pipe welding and equipment repair. MSM utilizes several welding processes which include the use of mechanized GMAW, automated GTAW-P, submerged arc, SMAW and manual GTAW. We specialize in NACE / API 6A / ASME BPVC / DNV compliant welding of low alloy steels for high pressure vessel construction, and corrosion resistant alloys such as alloy 625 and 316 on valves and flanges.

**CLADDING
CUSTOM
BLOCK**



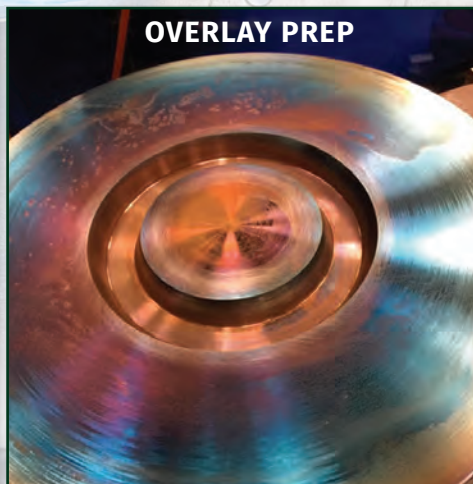
IN-PROGRESS INLAY WELDING



COMPLETE OVERLAY WELDING



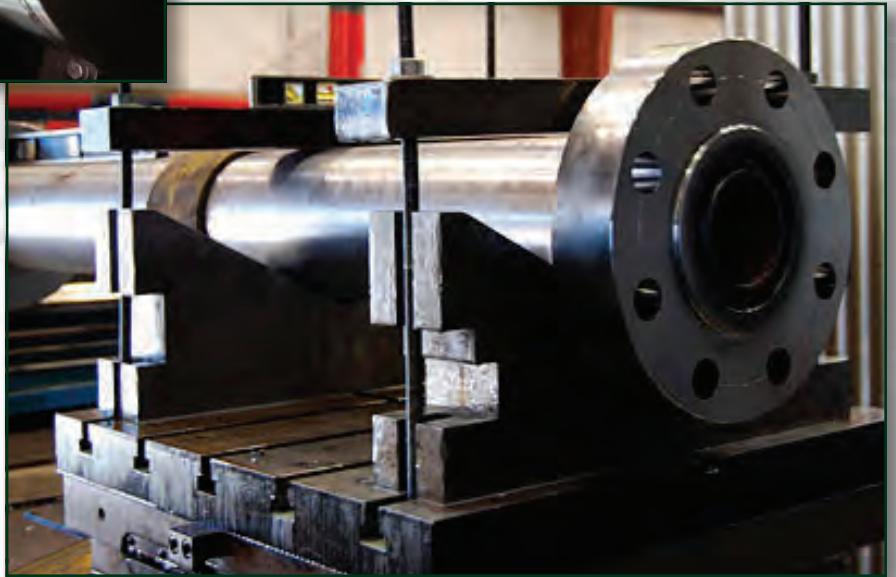
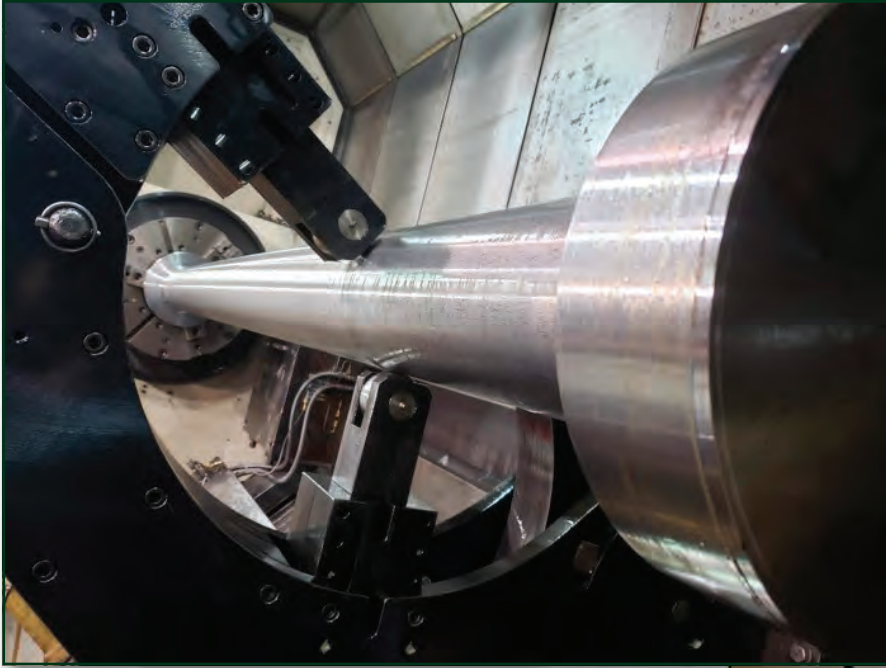
OVERLAY PREP



COMPLETE OVERLAY WELDING



MACHINING



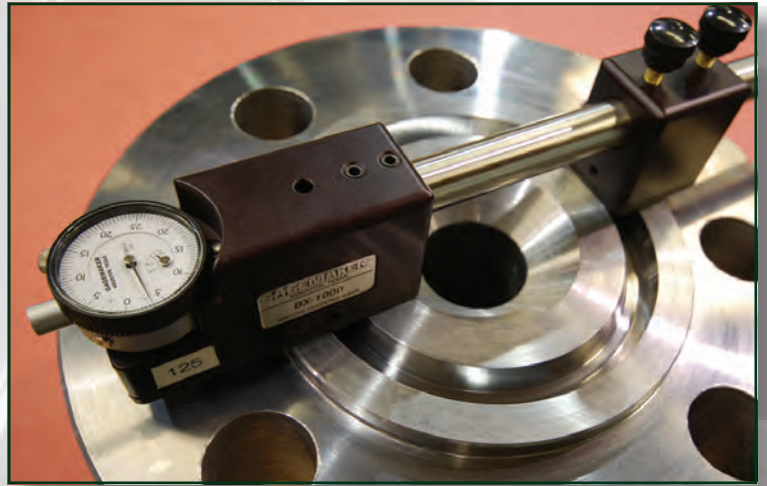
NDT LAB



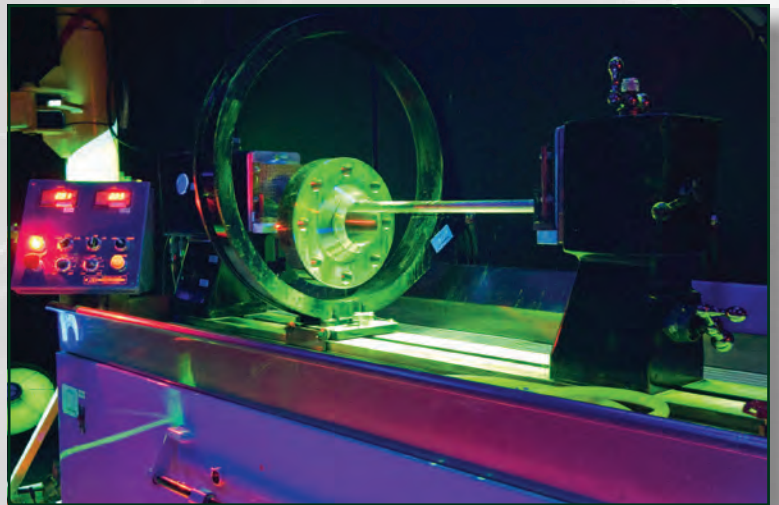
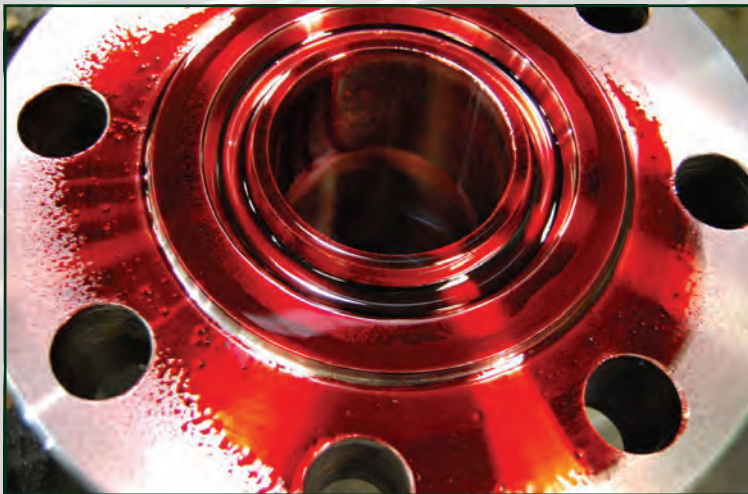
MIC TRAC



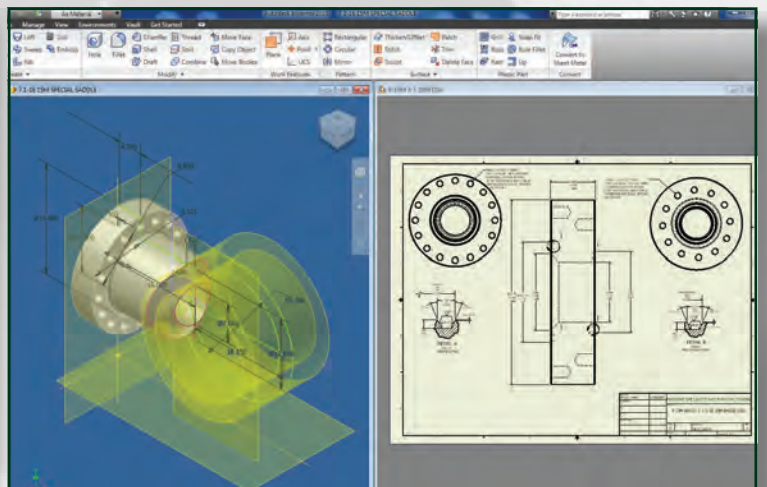
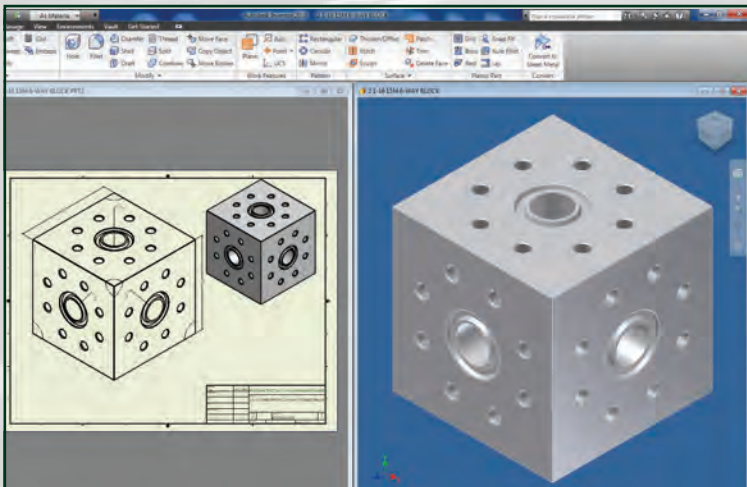
BX-1000 GROOVE DIAMETER



LIQUID PENETRANT TESTING



AUTODESK INVENTOR PROFESSIONAL / AUTOCAD



RAW MATERIALS





MACHINE SPECIALTY & MANUFACTURING, INC.

Youngsville

**215 Rousseau Road
Youngsville, Louisiana 70592**

**Phone: 337-837-0020
Toll Free: 1-800-256-1292
Fax: 337-837-0062**

Houma

**917 Sunset Avenue
Houma, Louisiana 70360**

**Phone: 985-879-4415
Toll Free: 1-800-264-4415
Fax: 985-879-4417**

**info@machine-spec.com
www.msmmfg.com**

**For all inquiries, orders or questions, contact us at 1-800-256-1292
or visit our website at www.msmmfg.com**